



## **Eureka Install for a Hard Disk License**

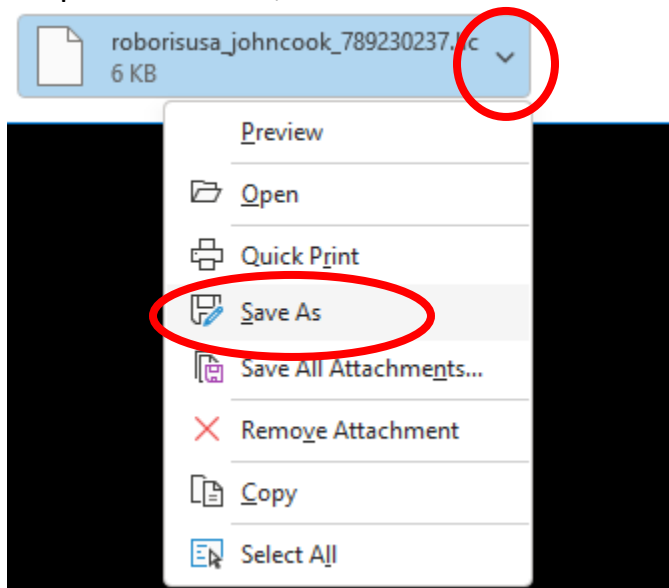
## Setting up the Eureka License Folder

1. Go to your local disk (C:) and create a folder “Eureka License”. This is the recommended folder name and location; however, you can choose to put the license file in a different location if you prefer.

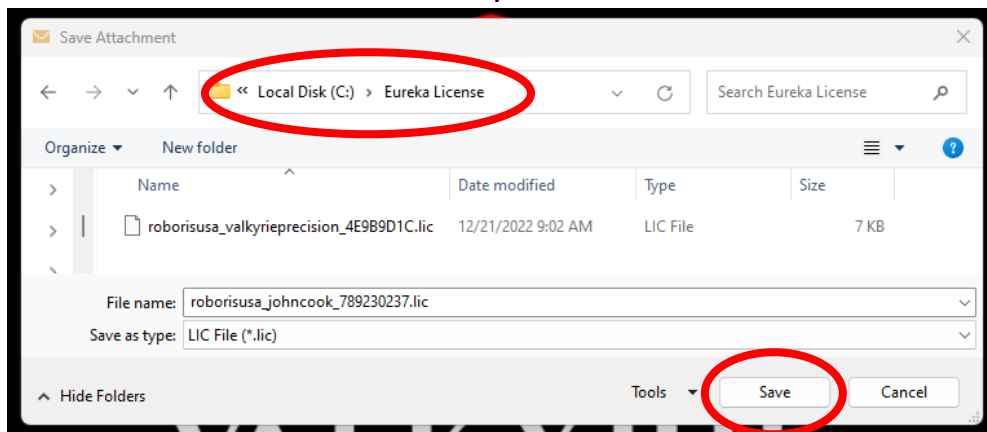
📁 > This PC > Local Disk (C:) > Eureka License

## Placing the License File in Eureka License Folder

1. Open the email you received with the License File attached, click on the drop-down arrow, and select save as.

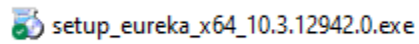


2. Go to the Eureka License folder you created and click “Save”.

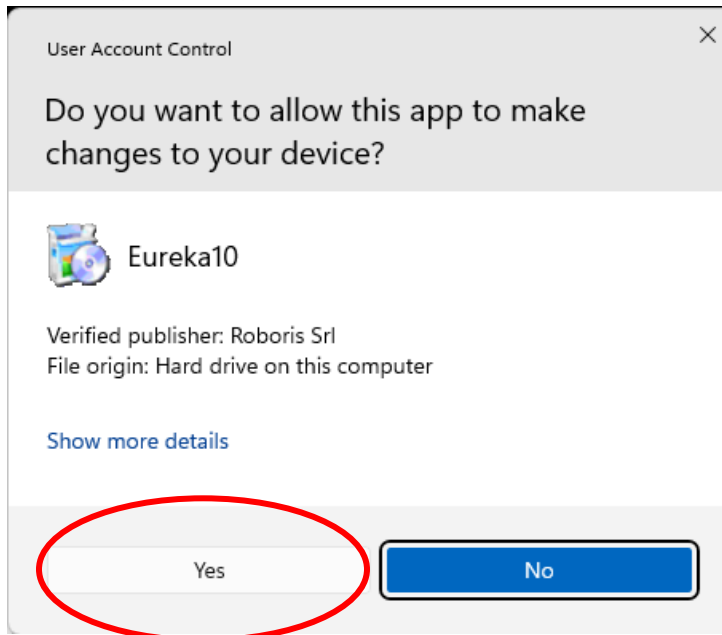


# Installing Eureka for a Hard Disk License

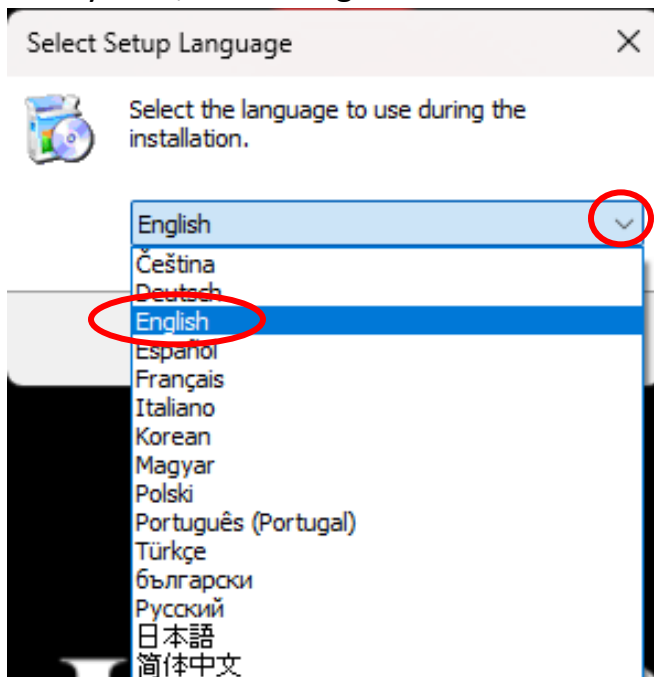
1. Open the eureka setup .exe file



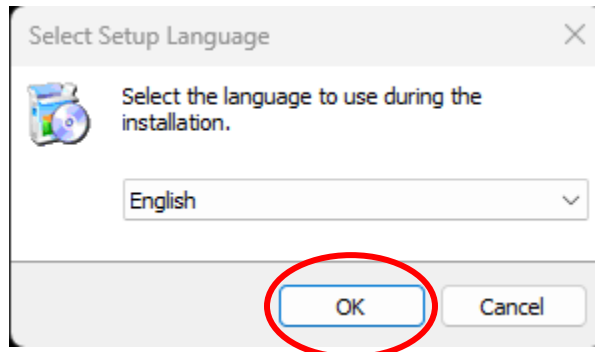
2. Allow app to make changes to your device, click the "Yes" button.



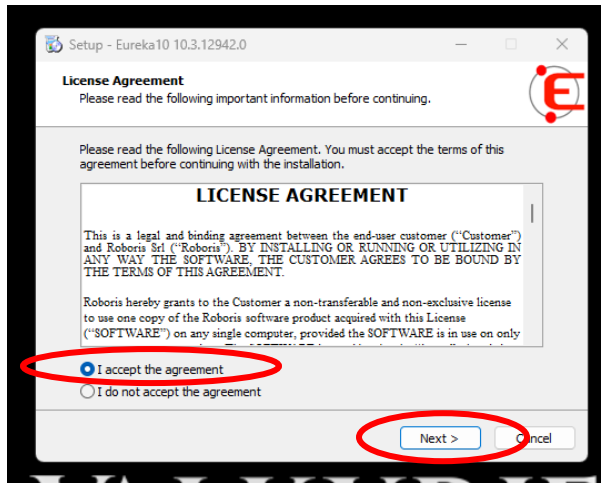
3. To select language, click the drop-down arrow and select a language. In my case, I want English so I will select that option.



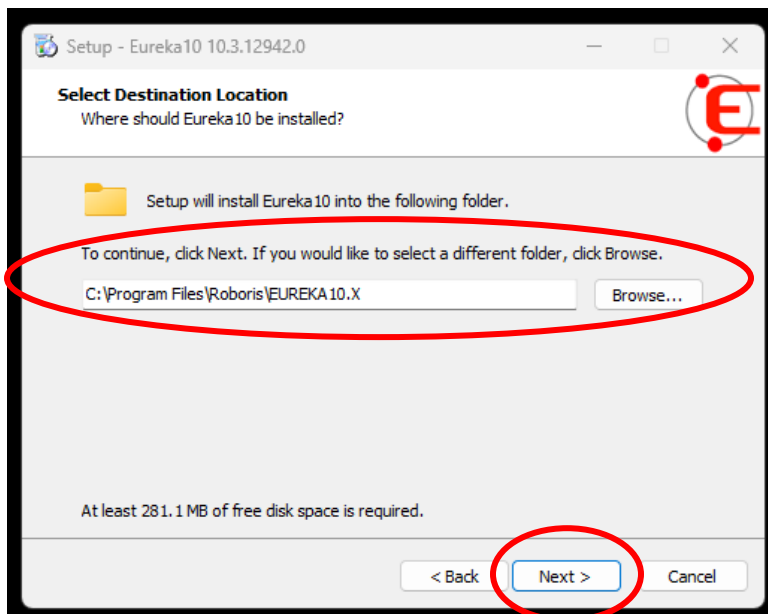
4. Click "OK".



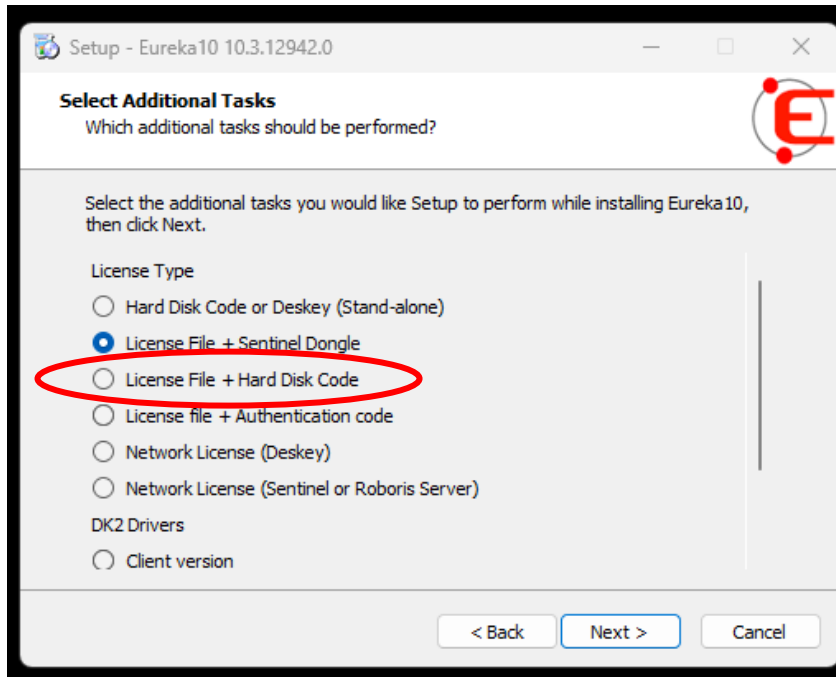
5. Accept agreement by clicking in the radial button, then clicking next.



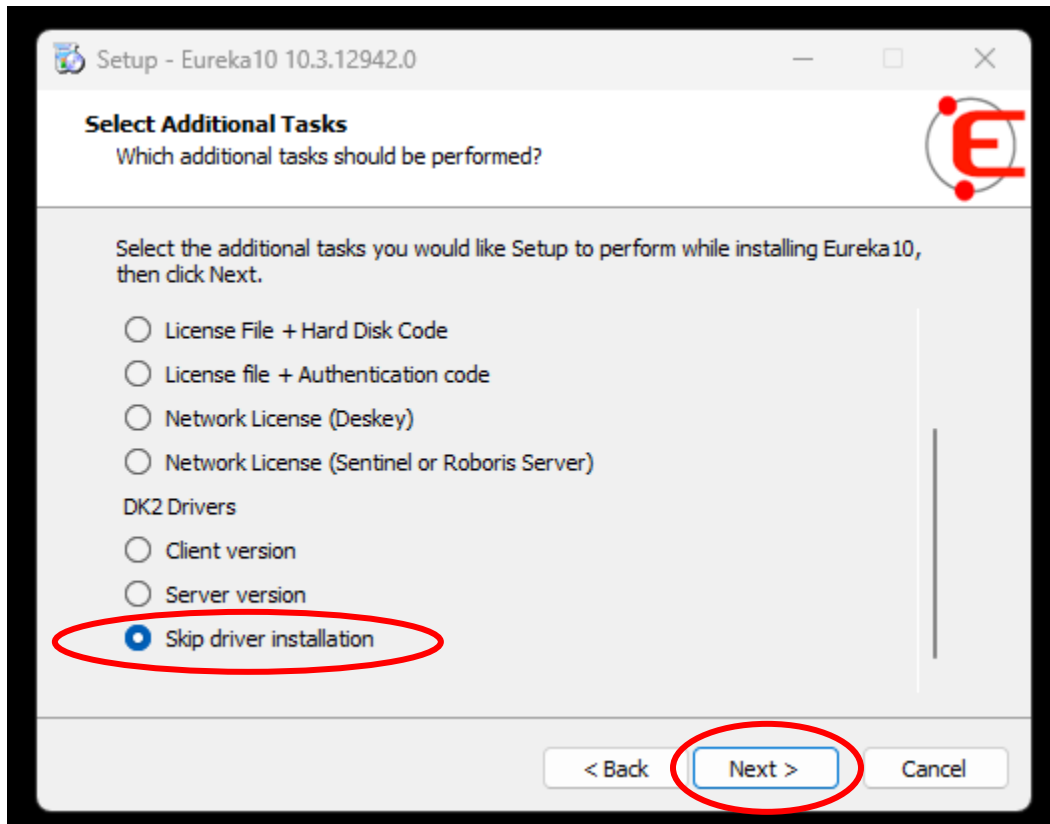
6. Select folder location and click "Next" or click "Next" to accept the default location.



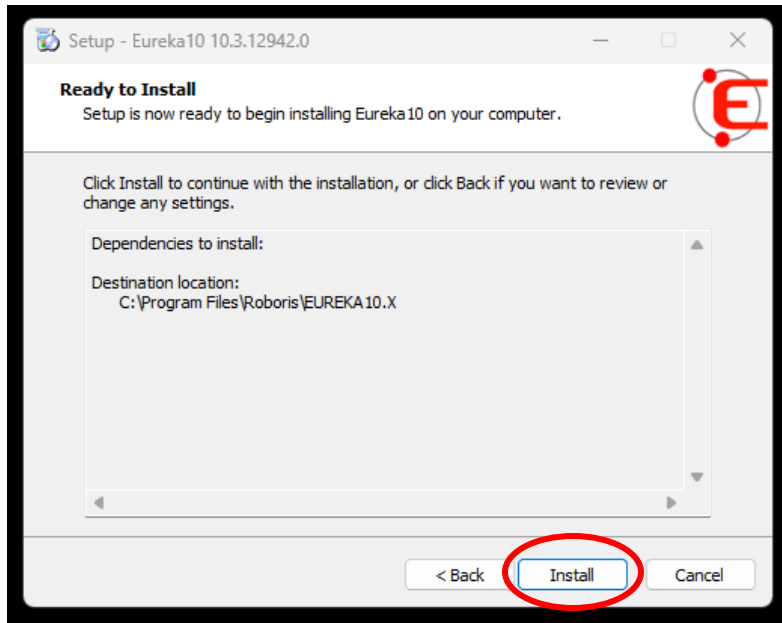
7. Select “License File + Hard Disk Code”.



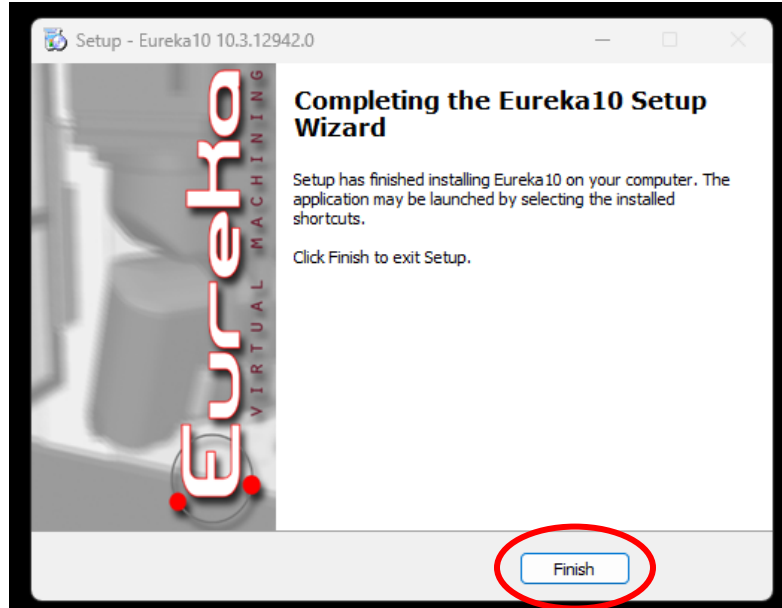
8. Scroll down, and in the DK2 Driver section, select “Skip driver installation”, then click “Next”.



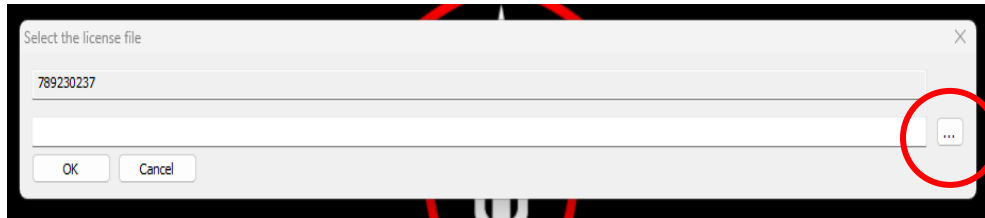
9. In the Ready to Install window, click “Install”.



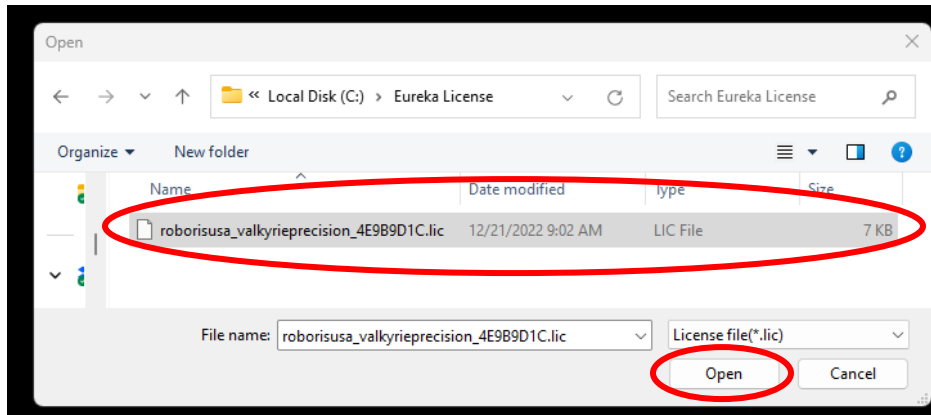
10. In the completing the Eureka10 Setup Wizard window that pops up, click “Finish”.



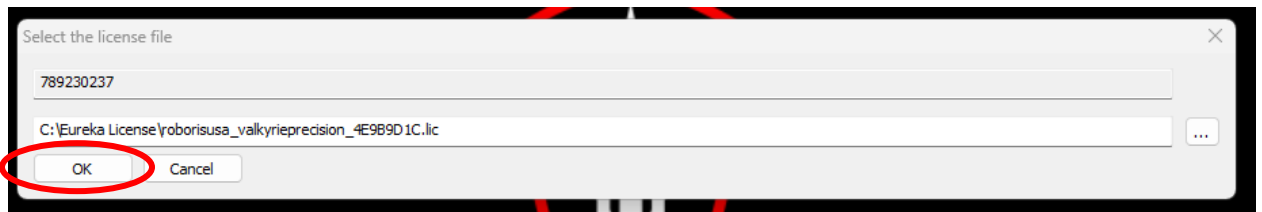
11. Open Eureka, when the bellow dialog box opens, click the button with the three dots.



12. Navigate to your license file, select it, and click "Open".



13. Click "OK" and Eureka will open.



## Additional Comments

1. Only the computer with the matching volume id will be able to open Eureka.





