



HAWK RIDGE SYSTEMS

# SOLIDWORKS Composer: 2017 Installation Guide

TITLE:	SOLIDWORKS Composer 2017 Installation Guide
DATE:	September 2016
SUBJECT:	Installing and licensing SOLIDWORKS Composer
ABSTRACT:	Instructions on how to install and activate SOLIDWORKS Composer



This document has detailed instructions on how to download, install, license and administer SOLIDWORKS Composer.

***Before loading any software, you should always login with full administrative permissions and disable your anti-virus and anti-spyware programs.***

This is not a troubleshooting guide. If you have any technical issues with SOLIDWORKS Composer, please contact a support technician through our website at <http://hawkridgesys.com/support> or call us at 1-877-266-4469 (U.S.A.) or 1-866-587-6803 (Canada).

This document is only to be distributed and used by Hawk Ridge Systems customers. Any other use is prohibited.

©2016 Hawk Ridge Systems

# Contents

SOLIDWORKS Composer: 2017 Installation Guide.....1  
 Before Installation.....2  
 Basic Installation.....3  
 Standalone Activation.....6

## Before Installation

**It is highly recommended to take a moment before installing SOLIDWORKS Composer to check that you are ready to load your new software. Follow these steps before installing SOLIDWORKS Composer:**

1. Check the hardware and operating system’s compatibility. At the time of this writing, Composer 2017 is compatible with Windows 10.
- 2.

### SOLIDWORKS COMPOSER

Operating Systems	SOLIDWORKS 2015 (EDU 2015-2016)	SOLIDWORKS 2016 (EDU 2016-2017)	SOLIDWORKS 2017 (EDU 2017-2018)
Windows 10, 64-bit	✓ (2015 SP5)	✓	✓
Windows 8.1, 64-bit	✓	✓	✓
Windows 8.0, 64-bit	✓	✗	✗
Windows 7 SP1, 64-bit (only)	✓	✓	✓
<b>Hardware</b>			
RAM	8GB or more recommended		
Video Card	HRS recommends	NVIDIA QUADRO <a href="#">Certified cards and drivers</a>	
Processor	Intel or AMD with SSE2 support. 64-bit operating system required		
Install Media	DVD Drive or Broadband Internet Connection		
<b>Microsoft Products</b>			
Internet Explorer	IE 9,10,11	IE 10,11	IE 11
Excel and Word	2010, 2013	2010, 2013, 2016 (2016 SP3)	2010, 2013, 2016
<b>Other</b>			
Anti-Virus	<a href="#">Supported Anti-Virus Products</a>		
Network	Microsoft Windows networking. Novell networks and non-Windows network storage devices are not supported		
Virtual environments	<a href="#">Supported virtual environments</a>		

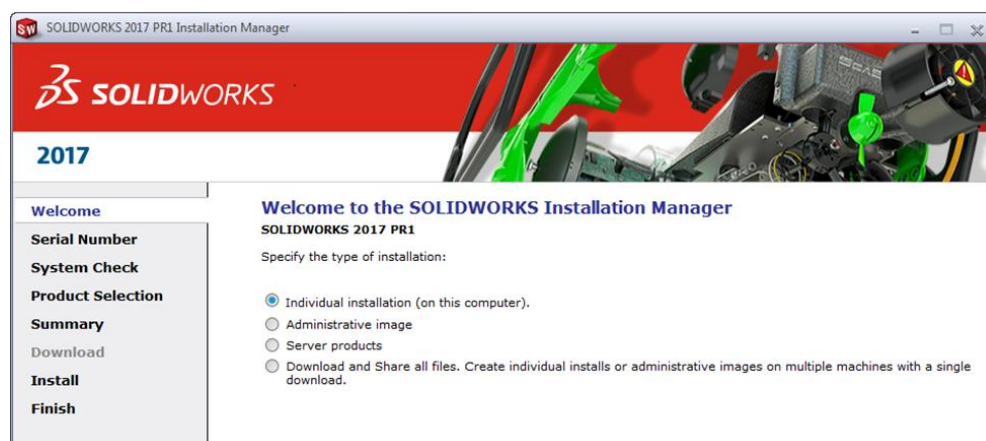
3. Check the hard drive for space. In Windows Explorer, check your drive (by default the C drive, right-click the drive and choose **Properties**) to see it has the 3 GB free required for the full program (with SOLIDWORKS Importer). Also, be sure the drive has at least 10% free space following the installation. A full disk may cause out-of-memory crashes.
4. Login to your computer with full administrative rights.
5. Turn down the User Account Control setting (found in the Control Panel). To do this, press your Windows button, either on the screen or on the keyboard. Then type "UAC" followed by the Enter key. The window that follows shows a vertical scroll bar. Make the setting "Never Notify" for the installation (requires restarting the computer to take effect) and change it back after installing, if you prefer.
6. Disable all anti-virus and anti-spyware tools.



## Basic Installation

SOLIDWORKS Composer is installed from the SOLIDWORKS installation disc. It uses the same Installation Manager as SOLIDWORKS. If you did not receive the SOLIDWORKS disc in the mail, you will need to download the SOLIDWORKS Installation Manager to download and install SOLIDWORKS Composer.

1. Put in the SOLIDWORKS installation disc and start the Setup.exe. If you need to Download Composer, go to <https://www.SOLIDWORKS.com/sw/support/subscription/downloads.htm> and choose the SOLIDWORKS version that corresponds to the version of Composer that you would like to install. (Please note that you will need to login before you can get to that address.) Follow the instructions to download and start the executable.



- Exit all other programs and click the **Next** button to continue.
- You will next have to put in your SOLIDWORKS Composer serial number.

Many users do not know that there is a serial number associated with SOLIDWORKS Composer; so if you are unable to find your serial number, please call us so we can send it to a previously-established email address.

**Do You Have Other Serial Numbers?**

SolidWorks Workgroup PDM

SolidWorks Simulation

SolidWorks Motion

SolidWorks Flow Simulation

SolidWorks Electrical Schematic

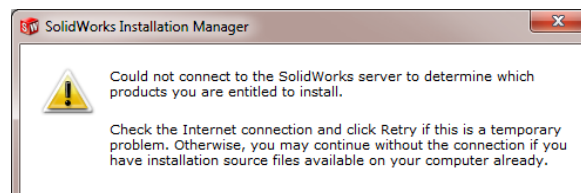
SolidWorks Composer

SolidWorks Composer Player Pro

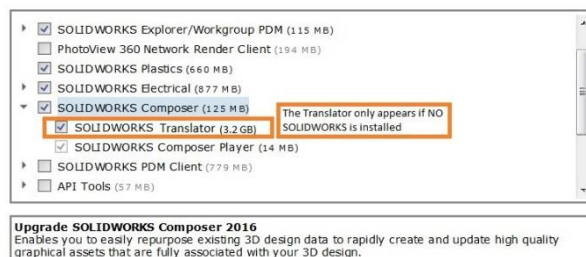
Note: Information on SolidNetWork license is available [here in the documentation](#).

- Press **Next** to continue.

If you are not online, it will warn that you cannot automatically select products to install. Pressing **Cancel** will continue with the load, but you must manually select all your add-ins during the installation instead of being given a list based on your serial number.



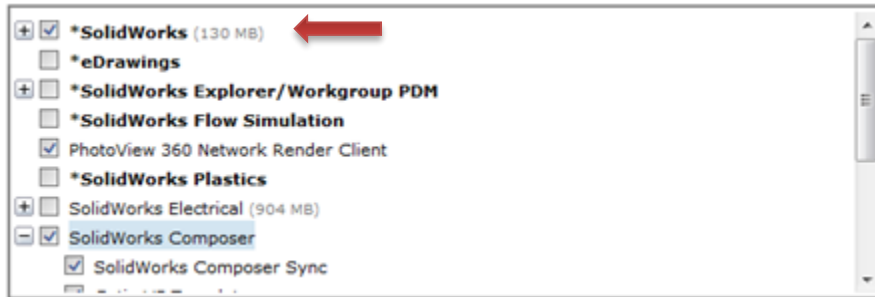
- If you do not have SOLIDWORKS on your machine, you will want to install the SOLIDWORKS Translator. If you do not select SOLIDWORKS in the product list, you will have an option to put a check mark next to the SOLIDWORKS Translator. This feature eliminates the ability to install the Translator and SOLIDWORKS onto the same computer.



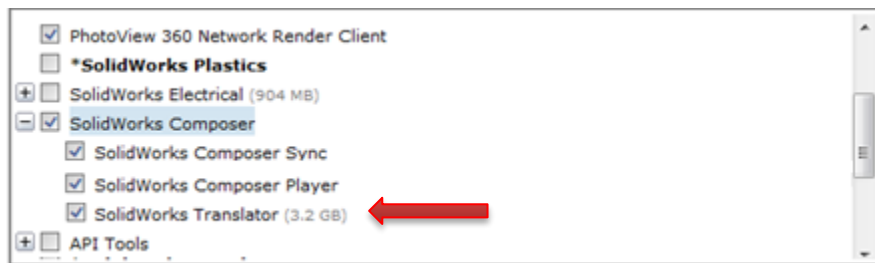
**Upgrade SOLIDWORKS Composer 2016**  
 Enables you to easily repurpose existing 3D design data to rapidly create and update high quality graphical assets that are fully associated with your 3D design.

**Estimated space required for installation: 5.5 GB**  
 Does not include the size of any downloads.

**With SOLIDWORKS selected for installation.**



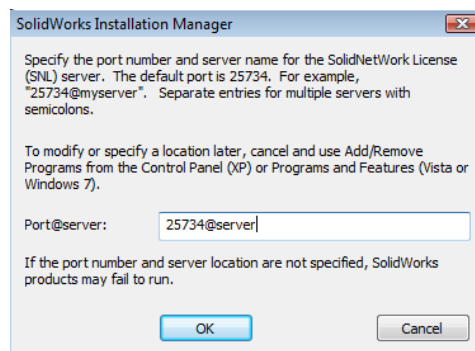
**Without SOLIDWORKS selected for installation.**



6. Verify all the information on the screen and continue with the installation.
7. Click the **Install** (or **Download and Install**) button to continue.



8. If you have a network license for Composer, you will be asked to specify the SNL location. This is where your SolidNetWork License Manager is loaded and running. The default port number for this is **25734**. Type "**25734@<server name>**" and press **OK** to continue. To setup the license manager, please see our Network Server Install guide.



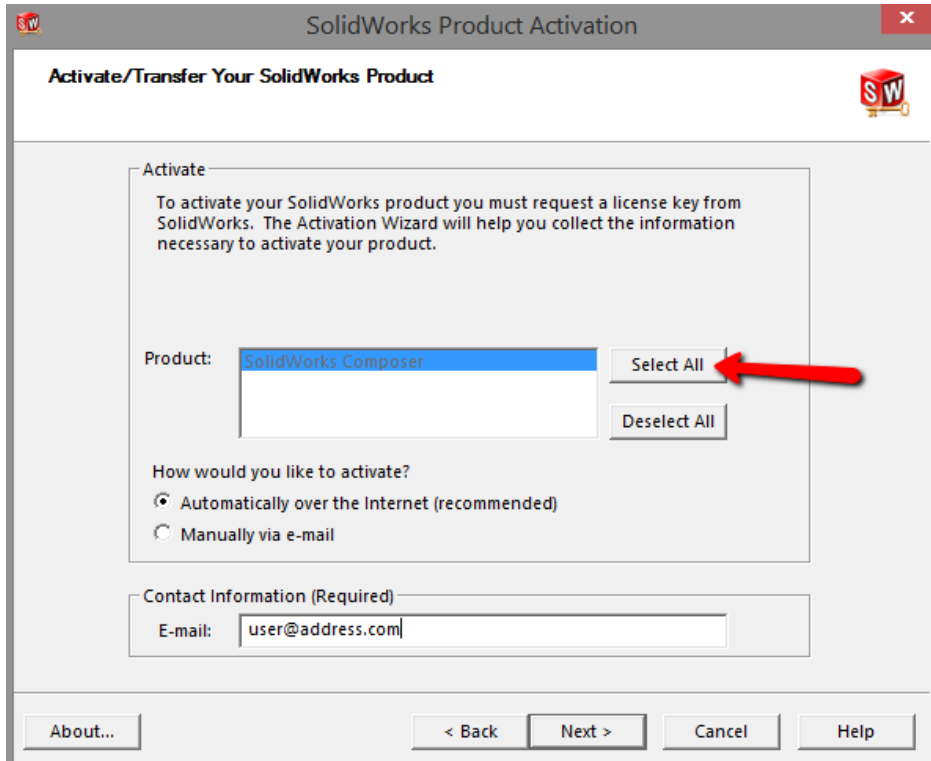
9. SOLIDWORKS Composer will install at this time.

## Standalone Activation

SOLIDWORKS Composer has activation-based licensing like SOLIDWORKS. The first time Composer is launched it will launch the activation wizard.

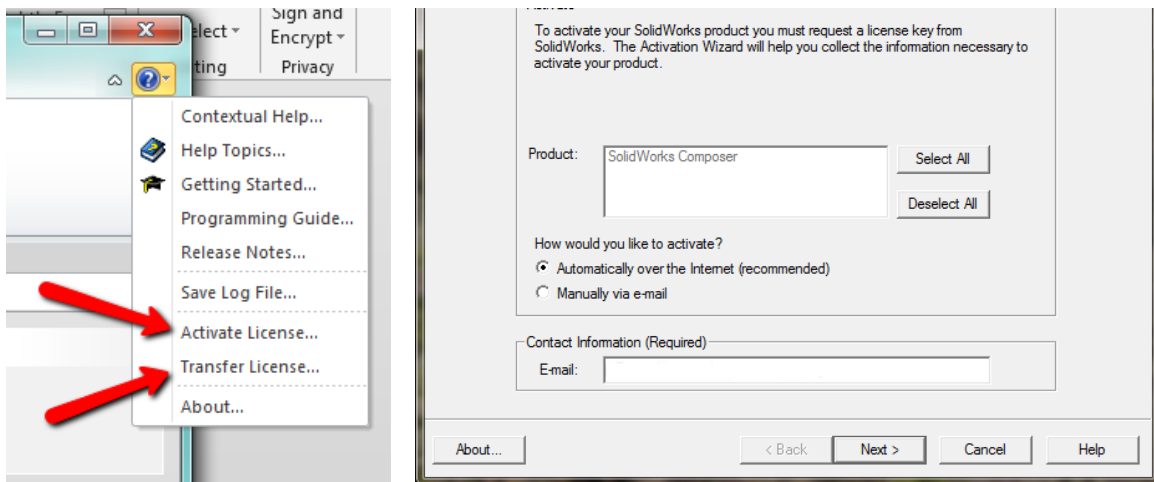
Follow the instructions to activate SOLIDWORKS Composer over the internet.

1. If prompted select 'Activate/Reactivate a software license' at the first prompt.
2. Highlight the composer license in the activation wizard by click 'select all' then enter your email address and choose 'Next' – this will launch the activation process.



3. Once the activation process completes, Composer will be fully licensed and installed. If the activation does not succeed Composer will launch with a temporary 30-day activation.

To manually run activation you may launch the activation wizard from within the help menu and follow the same steps as above. Go to Help -> Activate Licenses



Once SOLIDWORKS Composer is activated, you will be able to use the product. Please note that if you need to install SOLIDWORKS Composer onto a new machine, please transfer the license off the machine that is no longer going to be used.

***Your standalone installation of SOLIDWORKS Composer is now properly installed and licensed.***

Thank You for choosing Hawk Ridge Systems!