

2017 Network Client Installation Guide

TITLE:	Network Client Installation Guide
DATE:	September 2016
SUBJECT:	SolidNetWork client install
ABSTRACT:	Comprehensive guide on installing a SolidNetWork client for SOLIDWORKS 2017



This guide is written for SOLIDWORKS 2017. If you are using an earlier version of SOLIDWORKS, please download our earlier installation documents.

Before loading any software, you should always login with full administrative permissions and disable any anti-virus and anti-spyware programs.

Before installing a network client, you must first install the SolidNetWork License Manager. If you have not done this yet, please see our document on Network Server Installation before continuing with the client install.

This is not a troubleshooting guide. If you have any technical issues with SOLIDWORKS, please contact [Hawk Ridge Systems Technical Support](#).

This document is only to be distributed and used by Hawk Ridge Systems customers. Any other use is prohibited.

©2016 Hawk Ridge Systems

Contents

2017 Network Client Installation Guide.....	1
Before Installation.....	2
Basic Installation.....	4

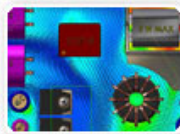
Before Installation

Hawk Ridge Systems highly recommends taking a moment before installing SOLIDWORKS to check that you are ready to load your new software. Follow these steps to have a better experience using SOLIDWORKS:

1. Check hardware compatibility.

- Log in to www.solidworks.com, click the **Login** link at the top of the page and login to the customer portal. In the self service area, there are links to check [video card](#) compatibility as well as minimum [system requirements](#).

System Requirements



Research graphics cards, system requirements for SolidWorks products, and other hardware related topics.

- You can also see Hawk Ridge Systems' recommended hardware by logging in to <http://support.hawkridgesys.com/> and reviewing our hardware recommendations. You can see brand name makes and models we suggest for best performance. We also have a more comprehensive hardware guide that discusses all types of considerations for your system.

2. Check Operating System Compatibility.

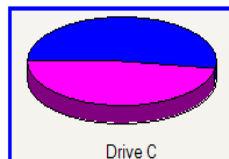
- Here is a checklist of compatible operating systems for the different versions of SOLIDWORKS. You can find the latest version of this under the [system requirements](#) page of solidworks.com after you login.

Operating Systems	SOLIDWORKS 2015 (EDU 2015-2016)	SOLIDWORKS 2016 (EDU 2016-2017)	SOLIDWORKS 2017 (EDU 2017-2018)
Windows 10, 64-bit	✓ (2015 SP5)	✓	✓
Windows 8.1, 64-bit	✓	✓	✓
Windows 8.0, 64-bit	✓	✗	✗
Windows 7 SP1, 64-bit (only)	✓	✓	✓

- Be sure you are on the latest version of your operating system. You will want to check for and install any Windows updates before installing SOLIDWORKS.
- SOLIDWORKS *is not supported for use on Windows Home editions.*
- SOLIDWORKS 2017 will not install on a machine using Windows Vista, Windows 7 32-bit, or Windows 8.0 64-bit.

3. Check hard drive for space and overhead.

- In the Windows Explorer, go to My Computer and check destination drive (by default the **C drive**). *Right-click* this drive and choose **Properties** to see it has the 6 GB free required for the full program (not including some add-ins).
- Also be sure this drive has at least **15%** free space; a full disk may cause instability and crashes and cannot be defragged to optimize performance.



4. Confirm community's working version.

- SOLIDWORKS is not backwards compatible, meaning older versions cannot open files from newer versions. Be sure workmates, customers and/or vendors are all on the same version (i.e. SOLIDWORKS 2016 or SOLIDWORKS 2017) you are loading.



5. Backup your data.

- Ask a system administrator or existing user to see if there are any shared libraries such as a Toolbox or a data management vault. Toolbox library and PDM vault information should all be saved to backup locations. Then you can migrate the original libraries and vault to the newer version.
- If you have a shared location containing existing SOLIDWORKS files, it is recommended that you make backup copies of these files. Any templates or design libraries should also be saved to a backup folder.



- Uninstall previous version of SOLIDWORKS.
 - It is recommended that, after you have saved out all shared data, you should fully uninstall any previous versions of SOLIDWORKS from your machine. After fully uninstalling SOLIDWORKS and its add-ins you should install the new software.



Basic Installation

If you are installing 2017, and have a previous version of SOLIDWORKS already loaded, it is highly recommended that you uninstall your existing software before upgrading, as many file locations have changed. See our removal guide for more information on this process.

- Make sure you are logged in as the administrator.



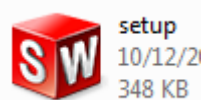
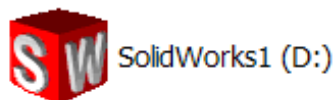
- Disable all anti-virus and anti-spyware tools as well as user account control.



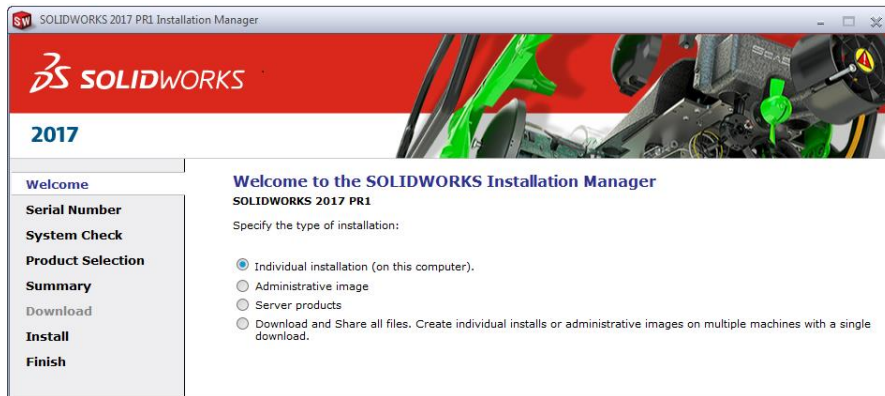
- Insert DVD into your computer. If you don't have a DVD, you can download the program from the customer portal at www.solidworks.com. For more information, see our download and update document.



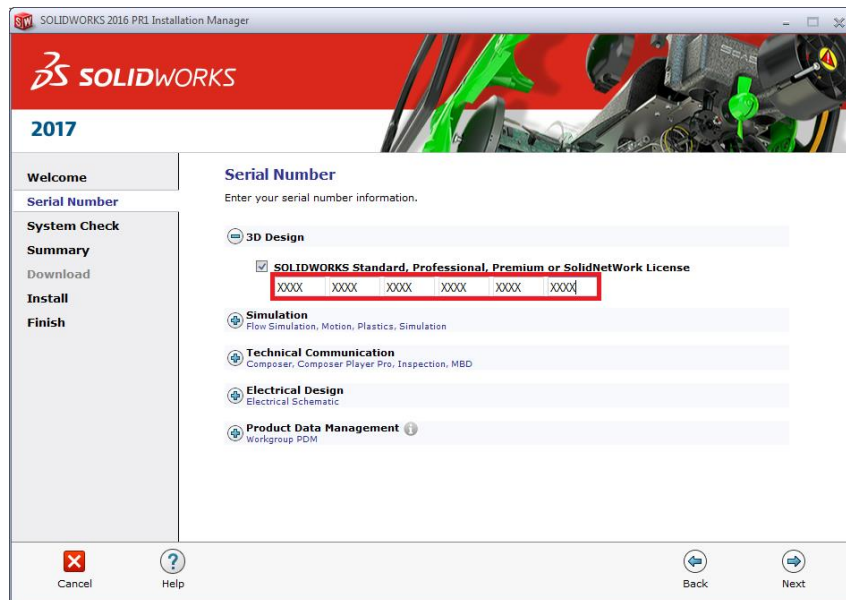
- The installer should start automatically. If it does not, explore to the DVD drive and double-click on the **SOLIDWORKS** icon, or right-click and choose **autoplay**. If you are using a download, double-click the **setup.exe** within the unzipped sldim folder if it does not run after unzipping.



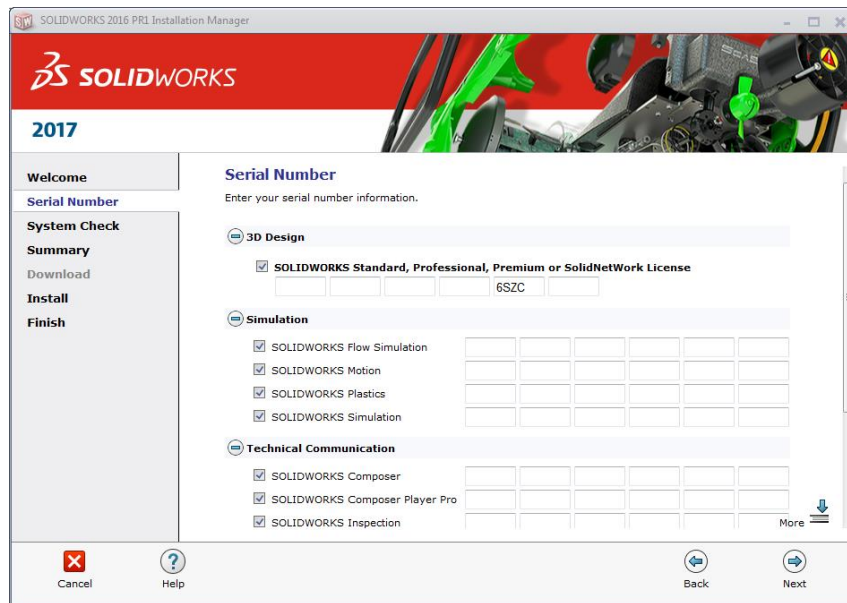
- The first page will welcome you to SOLIDWORKS and ask which type of installation you would like to perform. For a network client install, pick the option **Individual (on this computer)**. Press the **Next** button to continue.



- The next page will ask for your 16 or 24 digit serial number. If you have this information from a document, you can copy and paste this information into the first cell and it will fill out correctly.



- If you are loading other products with separate serial numbers, press the corresponding checkboxes and enter these numbers as well.

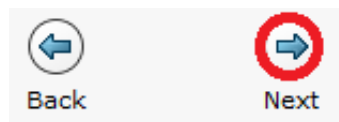


Note that SOLIDWORKS Workgroup PDM is included with SOLIDWORKS Professional and SOLIDWORKS Premium. A Workgroup PDM serial number only needs to be entered if this item was purchased separately with Standard SOLIDWORKS.

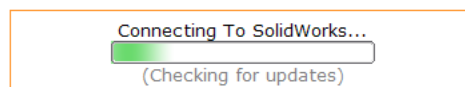
Also, Basic Simulation and SOLIDWORKS Motion are included with SOLIDWORKS Premium and these items only need to be entered if you have purchased these separately.

If you purchased Simulation Professional or Simulation Premium, you will want to enter your serial number for SOLIDWORKS Simulation to ensure the full version is loaded.

- Click the **Next** button to continue. You may be informed that there is a newer version of SOLIDWORKS available for download. We recommend you choose to continue installing with your original service pack and upgrade later. Press the **Next** button to continue.

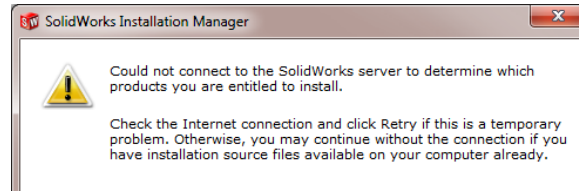


- The installer will check to see that it is up to date, as well as confirming what products you are entitled to load.





- If you are not online, it will warn that you cannot automatically select products to install. Pressing **Cancel** will continue with the load, but you must manually select all your add-ins during the installation instead of being given a list based on your serial number.

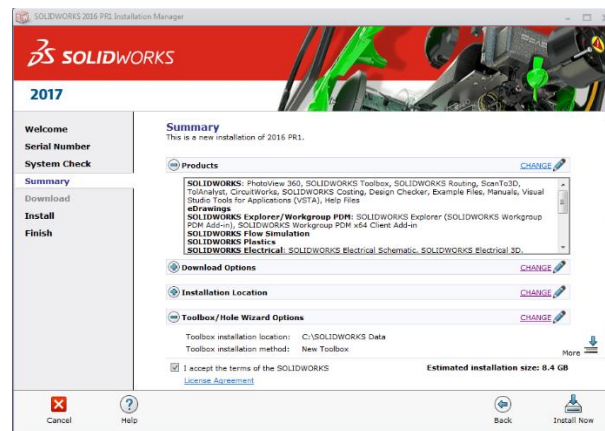


- The system will detect any previous installations of SOLIDWORKS.

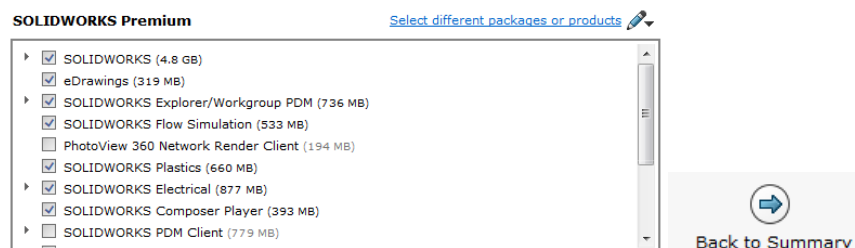
If an existing SOLIDWORKS installation is detected, you have the option of installing a new installation, or upgrading an existing installation. **We recommend loading as a new installation.** If you have an existing SOLIDWORKS installation you should save any: **Libraries, templates, vault, and shared toolbox locations.** Then remove the older version of SOLIDWORKS and continue your installation.

- Click the **Next** button to continue.

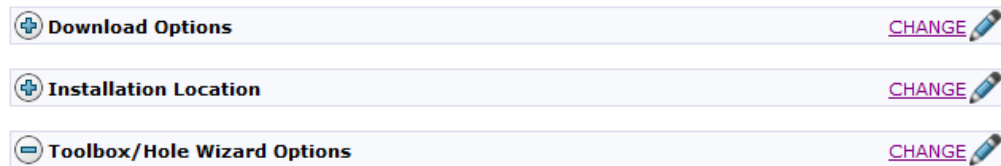
- With the serial number you provided, the version of SOLIDWORKS and its add-ins will appear in a list. If you would like to edit what products will be loaded, you can press the **CHANGE** button to customize your installation.



- If you choose to add or remove items from this installation, you can do this with the checkboxes in front of each item. Press the **Back to Summary** button to return to the revised summary.



15. If you wish to edit your Download Options, Install Locations or Toolbox Options, you can press the Plus symbol (+) in front of the desired item. Press the **CHANGE** button on any of these summary items to customize them.



Recommendation:

If the download method is left at the default setting of "maximize speed" this uses as much bandwidth as possible and will slow down the internet speed for others on your network. Press the **CHANGE** button for **Download Options**, uncheck the **Speed up downloads by using more network bandwidth** box and then press **Back to Summary** to continue.

How do you want to download?

Conduct manual download - Use this option if you have trouble downloading automatically.

Speed up downloads by using more network bandwidth.

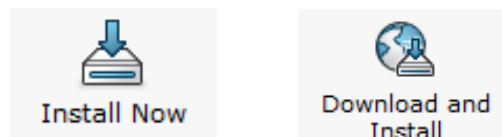
Hole Wizard Options:

If you have an existing library, you should update this if you plan on using existing assemblies in 2017. If you choose to update, make sure all users are going to use 2017; you **cannot mix toolbox information from older versions**.

You will also be shown the required file size and available disk space at the bottom of this page. If there are any items selected earlier that require download, the size of these will be listed too.

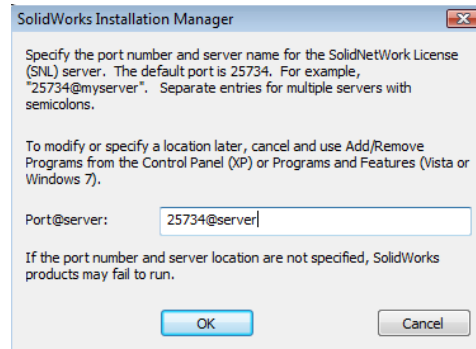
Estimated installation size: 5.4 GB
Estimated download size: 2.1 GB

16. Click the **Install** (or **Download and Install**) button to continue.

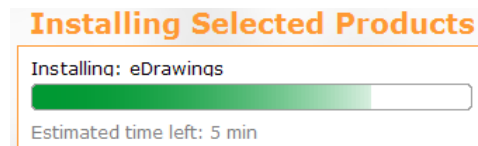




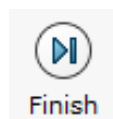
17. You will be asked to specify the SolidNetWork License Manager (SNL) location. This is where your SNL is loaded and running. The default port number for this is **25734**. Type "**25734@<server name>**" and press **OK** to continue.



18. If any installation files need to download to load your summary options, these will be downloaded from the internet automatically.
19. Now SOLIDWORKS will install.
20. After SOLIDWORKS is installed, the other programs such as eDrawings, SOLIDWORKS Explorer and, depending on your package of SOLIDWORKS, any Data Management or Simulation items chosen during the product selection on the summary page module will also install.



21. Now that SOLIDWORKS and its add-ins have all been loaded, you have the option to automatically check for service pack updates periodically, open the "What's New" PDF or login and comment on the installation interface.
22. You can choose to join the Customer Experience Program if you wish. This will periodically send fault and usage information via e-mail to SOLIDWORKS to help improve the product.
23. Press the **Finish** button to complete the installation.



Thank You for choosing Hawk Ridge Systems!