

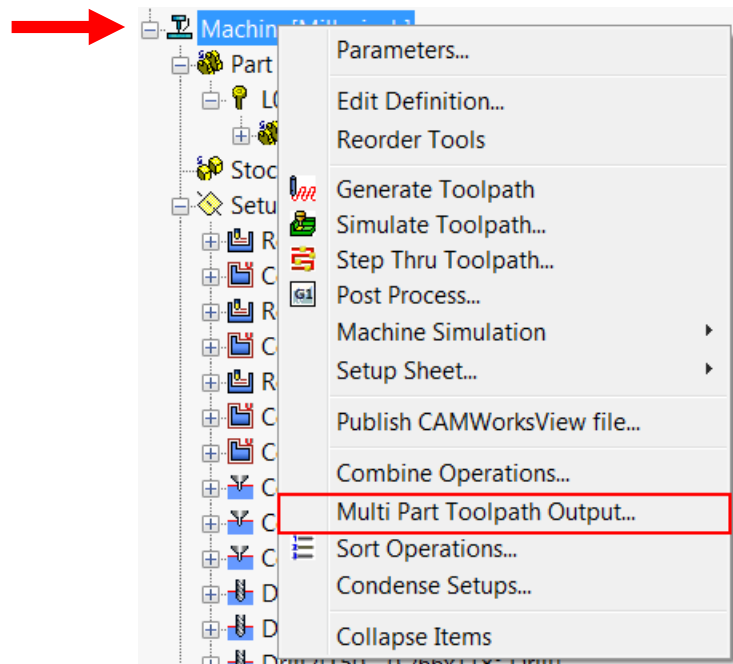
Machining Order – Assembly Files

When programming parts in assembly files, you may notice that the toolpaths with the same tools finish in order instead of each part or each feature separately. This is because the tool mode is set as the default machining order. To change this, follow the steps below.

1. Select the Operation Tree.



2. Right click on the Machine and select Multi Part Toolpath Output



3. Select the mode in which you would like to output the toolpaths by and then press OK.

