

SOLIDWORKS Becomes Transparent

TITLE:	Desktop is visible when working in SOLIDWORKS
DATE:	November, 2014
SUBJECT:	Fix for a common issue where the SOLIDWORKS workspace becomes transparent.
ABSTRACT:	This is a common issue where the NVIDIA nView software causes the SOLIDWORKS workspace to display windows or the desktop behind it.

Problem

This article describes a fix for the issue where a user's SOLIDWORKS window becomes transparent and display windows located behind it. This is an issue that only occurs on users with NVIDIA graphics cards. The solution below outlines the process to disable nView. Figure 1 is an example of the issue.

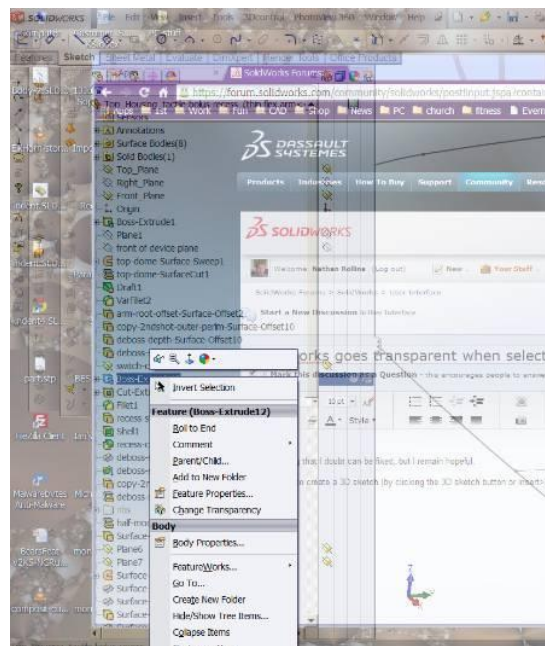


Figure 1.

What is nView

nView is a desktop manager software used to manage your workspace. This software is not essential to the functionality of the graphics card. This guide will show how to disable nView. Additionally, nView can be uninstalled from the control panel. [Click here](#) for more information regarding nView.

How to Disable nView

1. Navigate to the control panel. This can be done by clicking the “Start” button and selecting “Control Panel”
2. Open the “NVIDIA nView Desktop Manager”. See Figure 2.

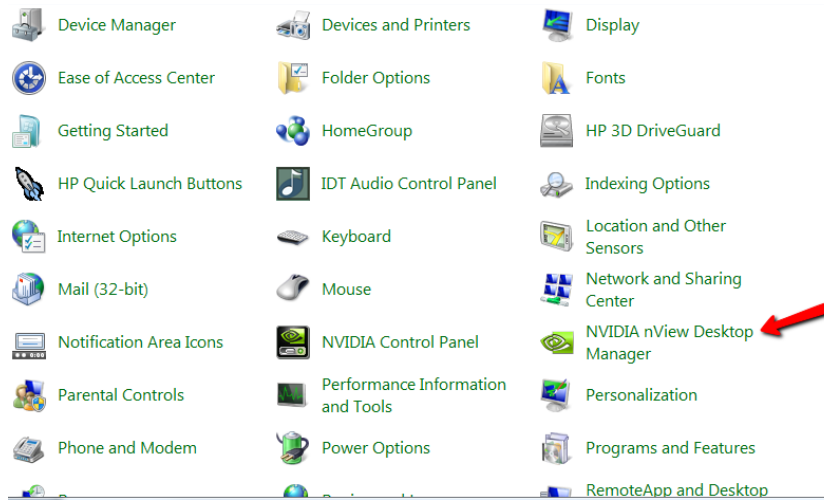


Figure 2.

3. Once open, navigate to the “Desktop Management” Tab and click the “disable” button. See Figure 3.

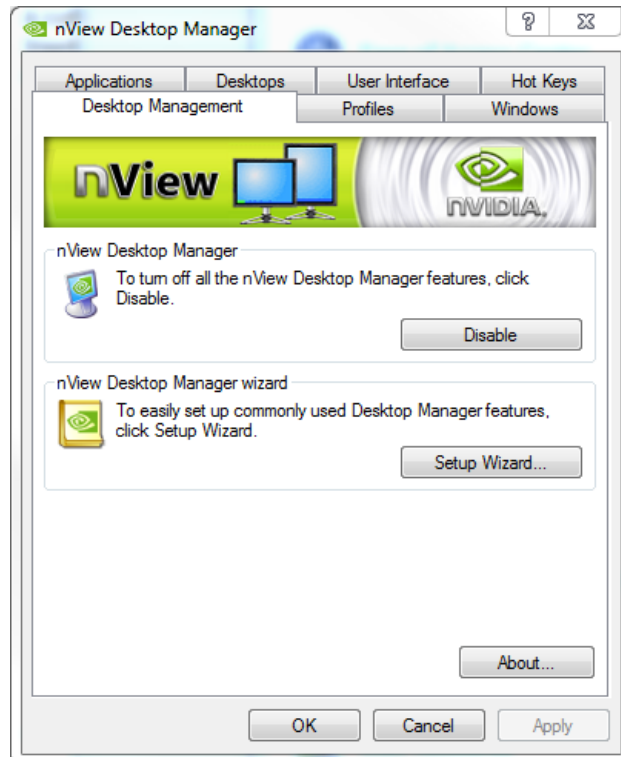


Figure 3.